



BNIP

LIFE Belgian Nature Integrated Project

LIFE14 IPE/BE/000002 BNIP



AGENCY
NATURE & FORESTS



federal public service
HEALTH, FOOD CHAIN SAFETY
AND ENVIRONMENT



Wallonie



natuurpunt



natagora
la nature avec vous



inverde



NATURA 2000



Life

LIFE Belgian Nature Integrated Project

A look at our [presentation](#) agenda

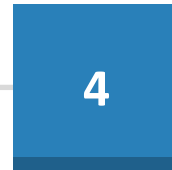
Background about LIFE

1

2

Background about BNIP

BNIP management in practice



More info needed?





BACKGROUND ABOUT LIFE



What is LIFE?



LIFE programme



(L'Instrument pour Financement l'Environnement)
€ 3,4 miljard (2014-2020)

Sub-programme for environment

€ 2,6 miljard (75% of LIFE budget)

Sub-programme for Climate Action

€ 0,86 miljard (25% of LIFE budget)

Nature & Biodiversity

€ 1,1 miljard
(55% of ENV sub-progr)

Environment & Resource Efficiency

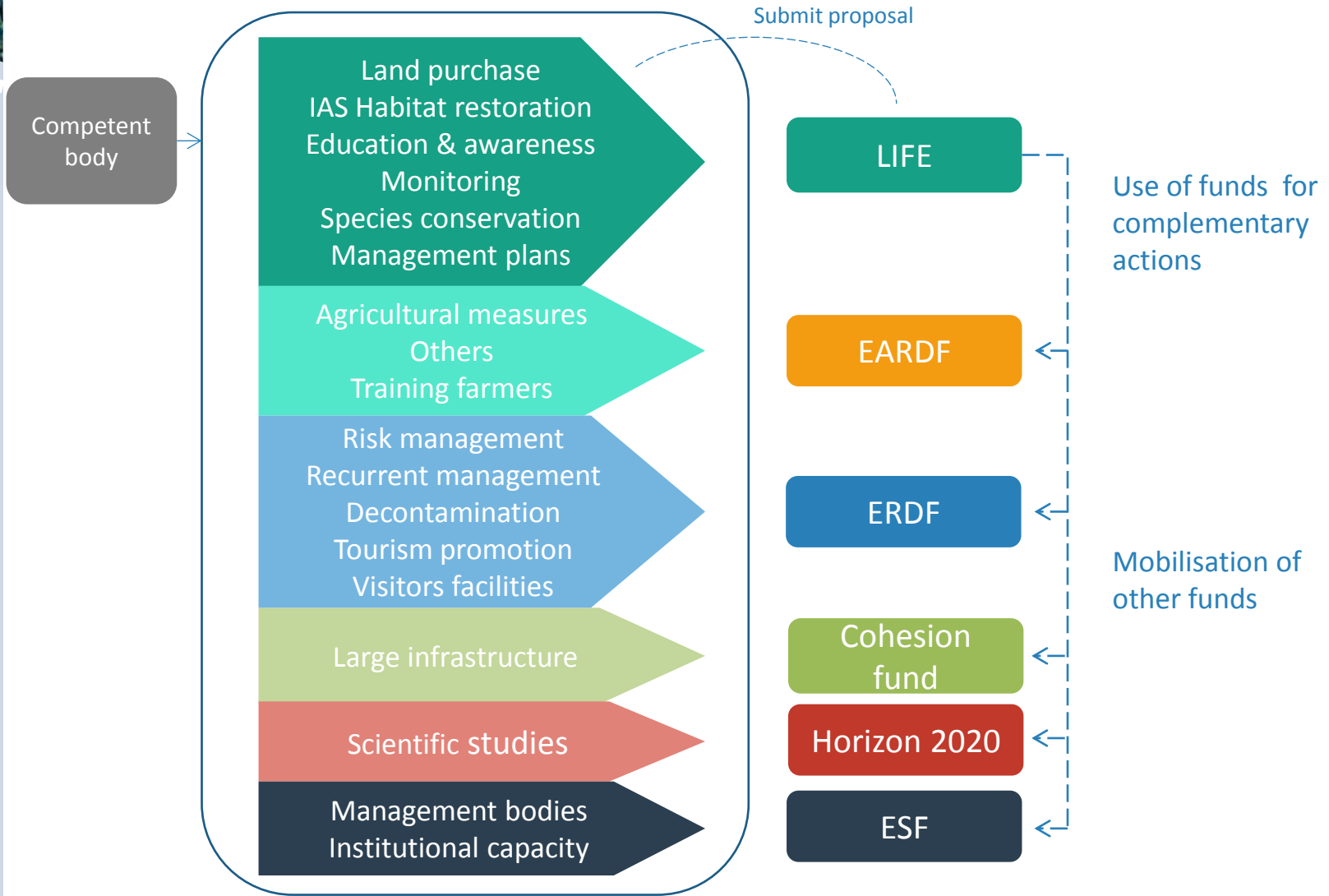
Information & Governance

Climate change mitigation

Climate change adaptation

Information & Governance

What is LIFE IP Nature?



National and regional fund, private sector funds





EU added value ?



- Boosting large scale implementation of EU Nature directives and Natura 2000
- Contribution to other EU environmental policies
 - EU Biodiversity Action plan – Biodiversity strategy 2020
 - EC Communication – Green infrastructure & Enhancing Europe’s Natural Capital
 - Water Framework Directive
 - Marine strategy Framework Directive
 - EU Climate Adaptation and Mitigation Strategies
 - EU 7th Environment Action programme
- Promoting multi-stakeholder approach that combines public sector responsibility with initiatives from private sector
- Support the greening of the CAP



LIFE IP Nature



Goal

- Operationalising and strengthening the Natura 2000 programme,
- Deploying and further refining the existing implementation framework
- Strengthening stakeholder participation

Criteria

- Covering a large geographic area – Belgium (ex Bxl)
- Implementing the existing strategy or action plan (e.g. PAF),
- Creating a leverage effect by mobilising other funds
- Involvement of Stakeholders
- Consultation process
- Best practice, innovation, demonstration



BACKGROUND ABOUT
LIFE BNIP

Complementary actions

LIFE BNIP project actions

Continuation of growth

After-LIFE

Natura 2000

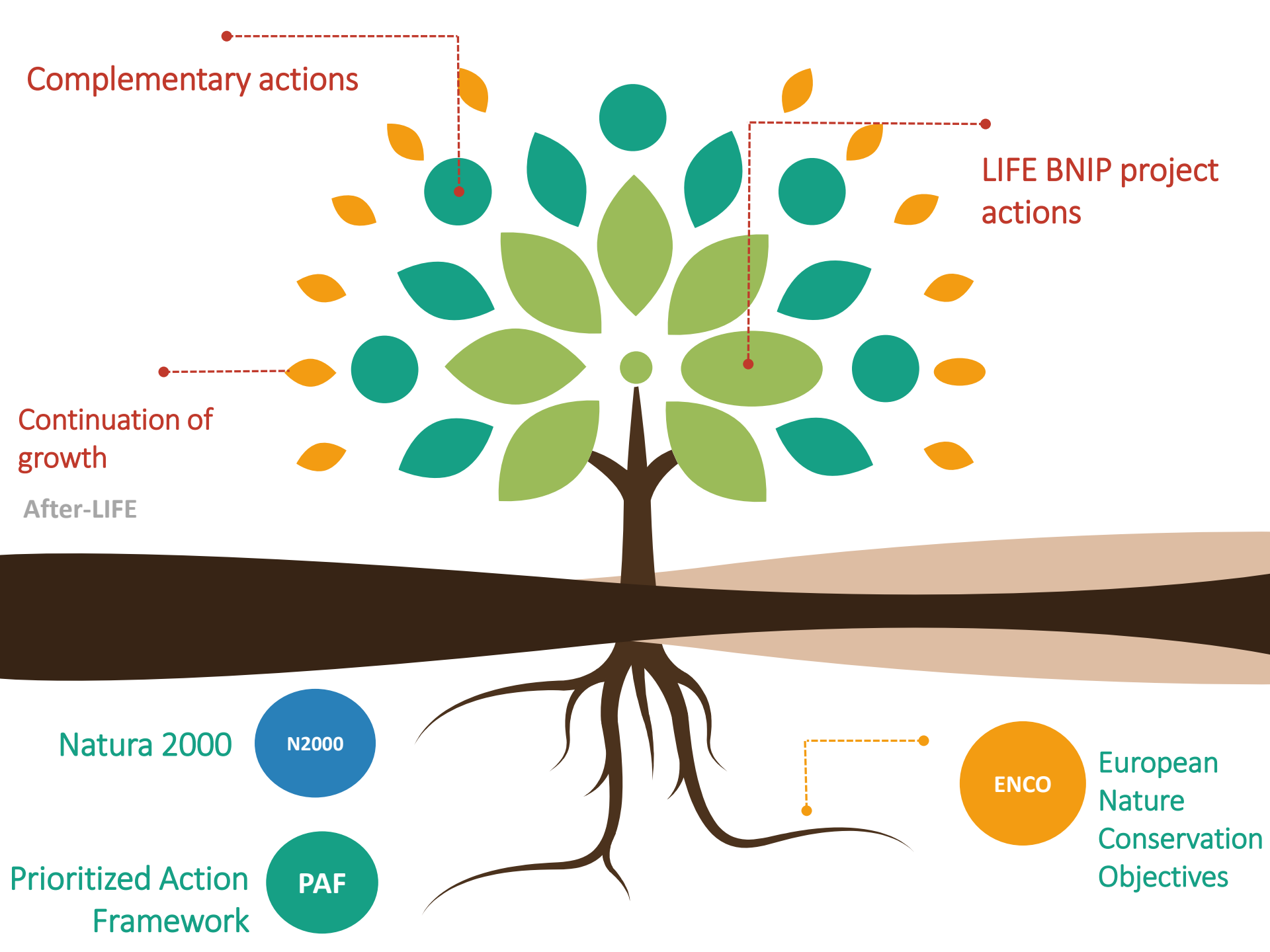
N2000

Prioritized Action Framework

PAF

ENCO

European Nature Conservation Objectives





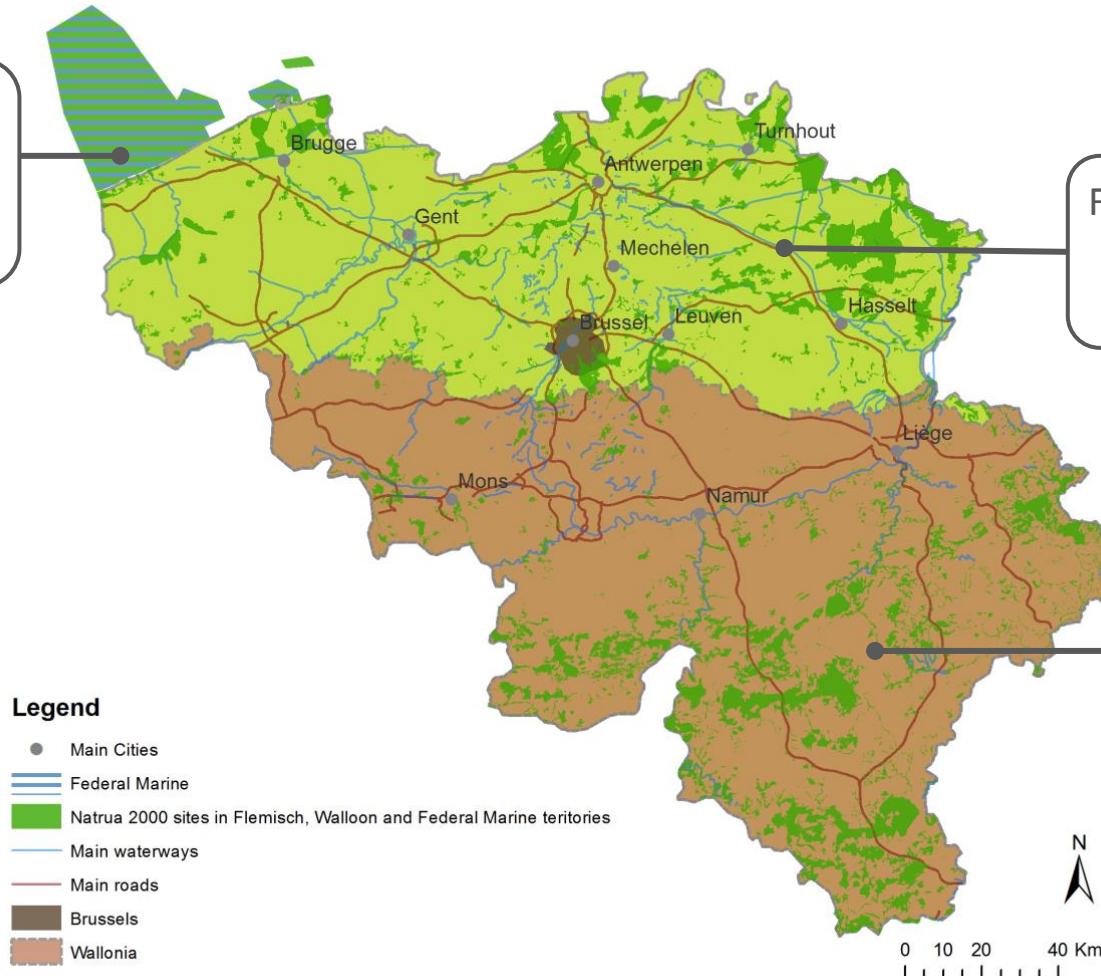
LIFE BNIP



Federal Public Service – Marine environment

Flemish public service
ANB, INVERDE
NGO Natuurpunt

Walloon public
service Nature,
NGO Natagora





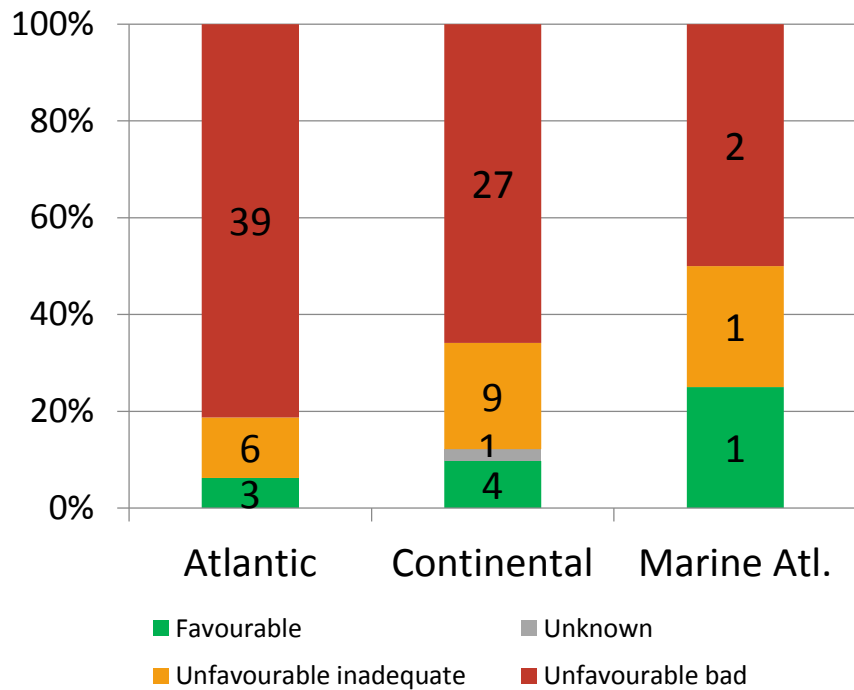
Regional competence



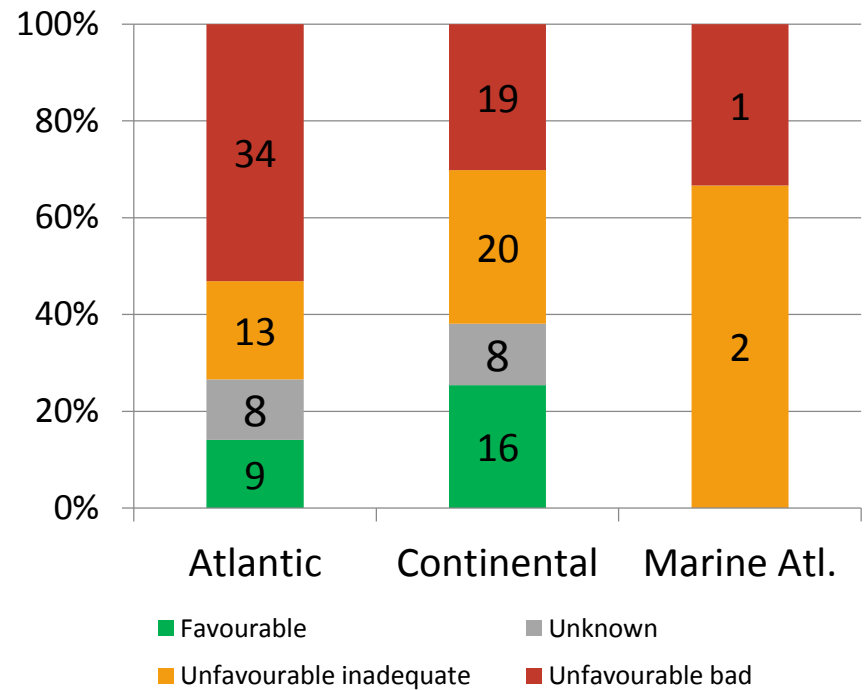
Region	SPA + SCI	% N2000	Km²	% Managed by state or NGO / private land
Flanders	62	12	1662	42/58
Wallonia	240	13	2209	55/45
Brussels (only SCI)	3	14	23	+ 90
Federal	4	36	1238	NA



State of play Art 17 - 2013



Habitats



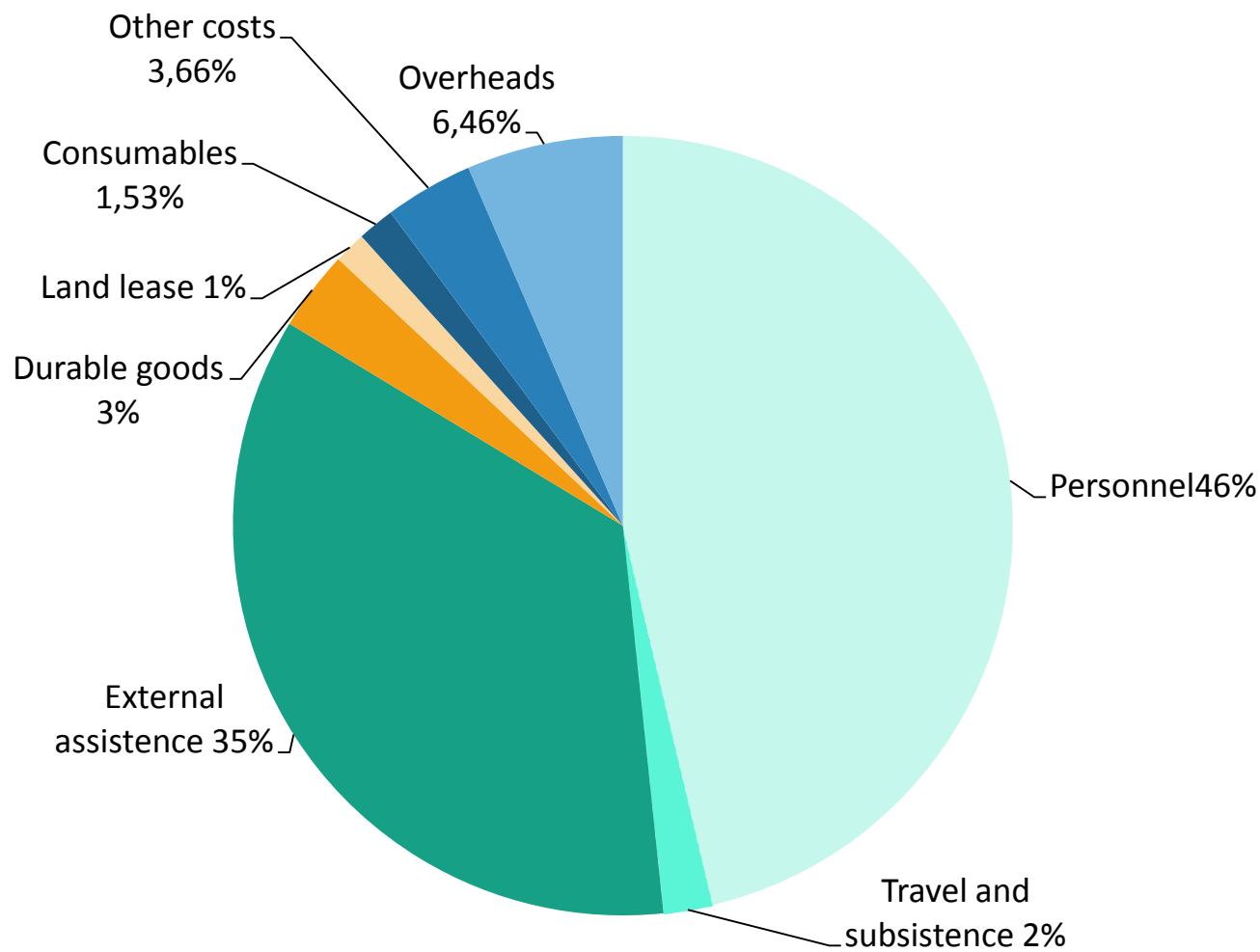
Species



Financing LIFE BNIP – € 19 mio



Budget categories

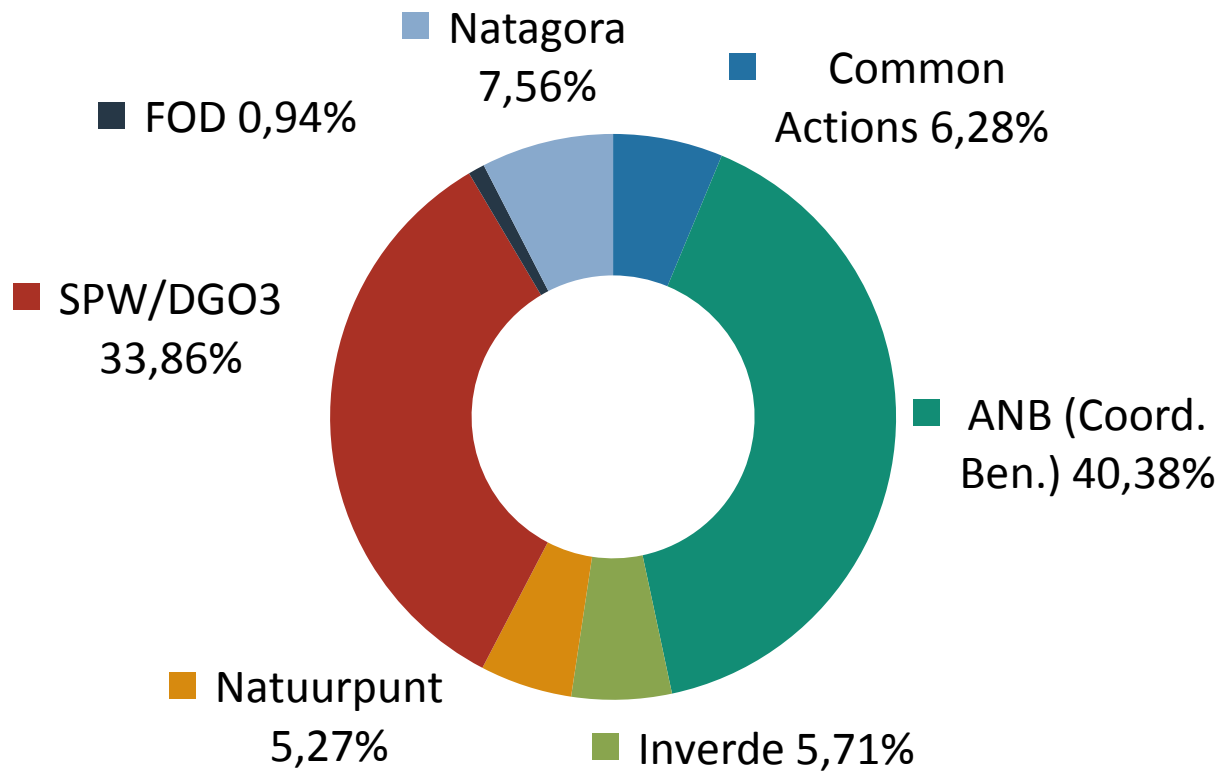




Financing LIFE BNIP – 19 mio



60% EU Co-financing
40% national/regional funding

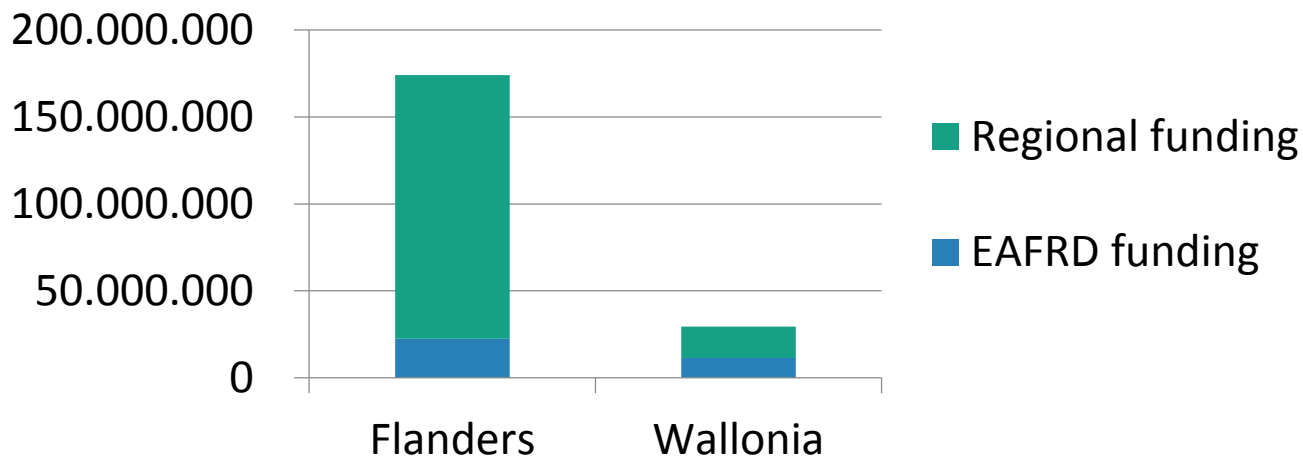




Complementary actions



Region	EAFRD funding	Regional funding	Total
Flanders	22,403,508	151,605,591	174,009,100
Wallonia	11,341,872	18,187,808	29,529,680
Total	33,745,380	169,793,399	203,538,780





LIFE BNIP MANAGEMENT IN PRACTICE



Our project in a nutshell



Stakeholders



Species Protection Programs



Actions in BNIP



Pilot projects



Management plans



Governments



+ 52

people working on BNIP

BNIP 2021 goal



Programme structure



Actionplans



Capacity building



Communication



Instruments & tools



Implementation projects

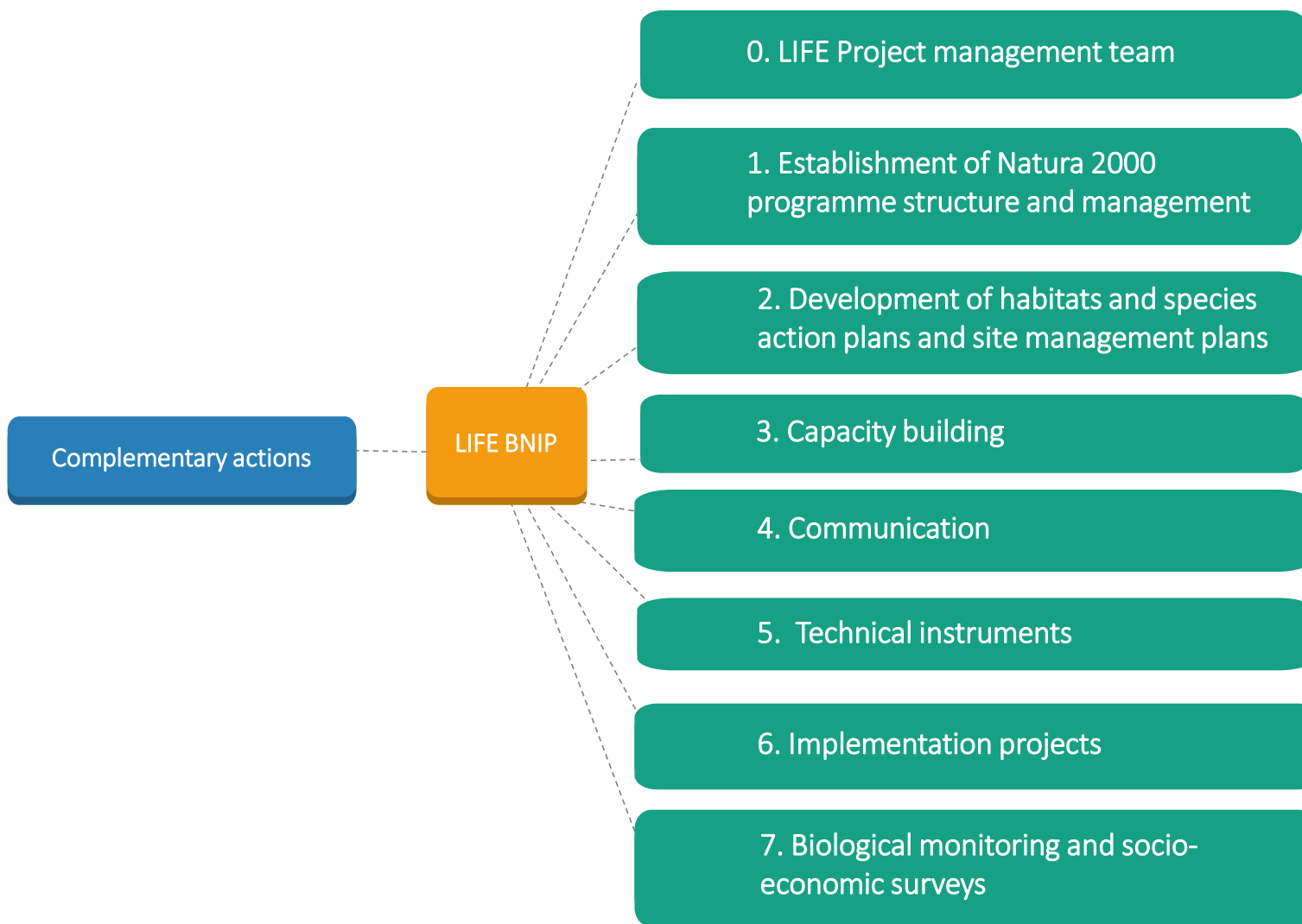


Scientific & socio-economic studies

Strategic project which helps to reach the goals of Natura 2000 and the European Nature Conservation Objectives



Seven thematic goals



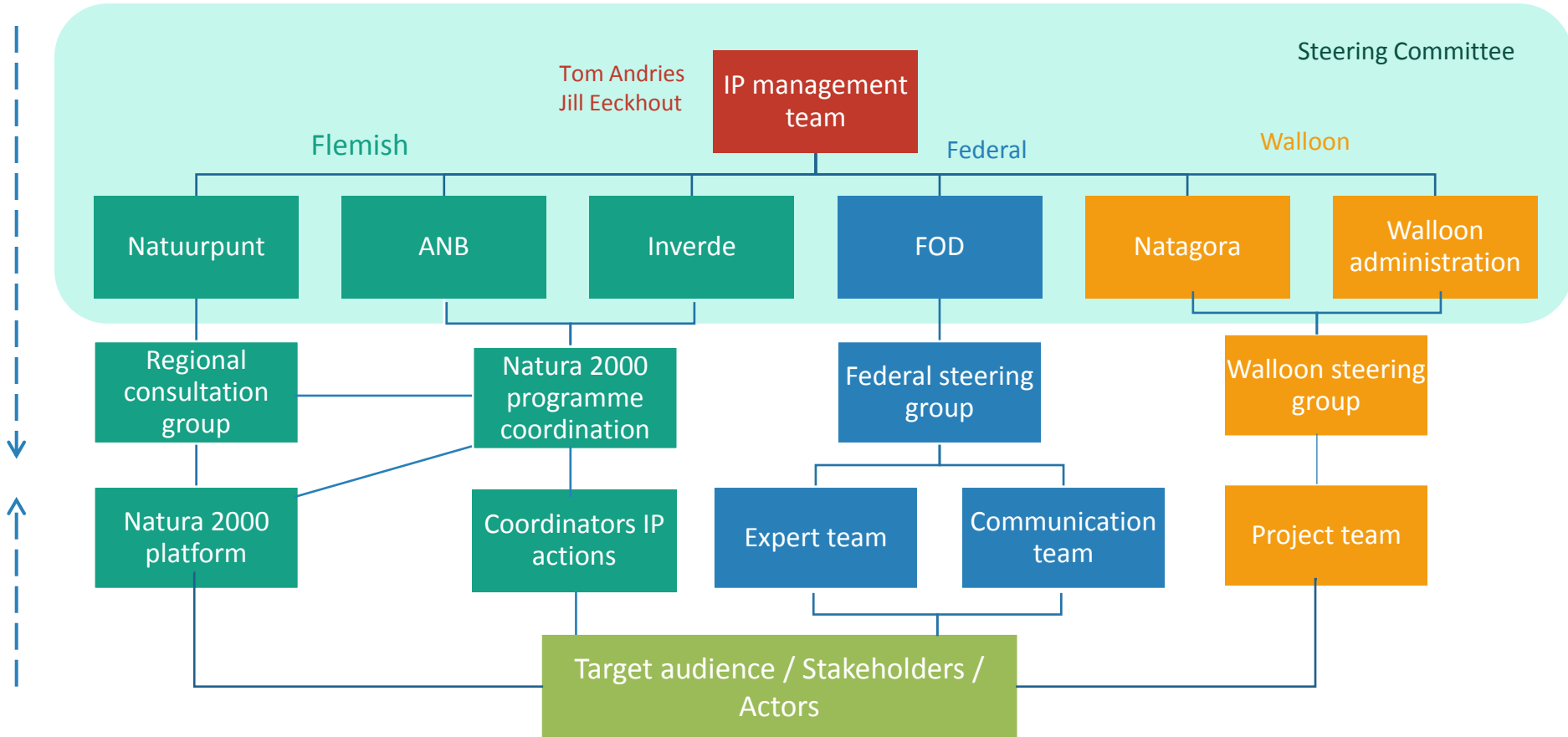


LIFE BNIP





Project management

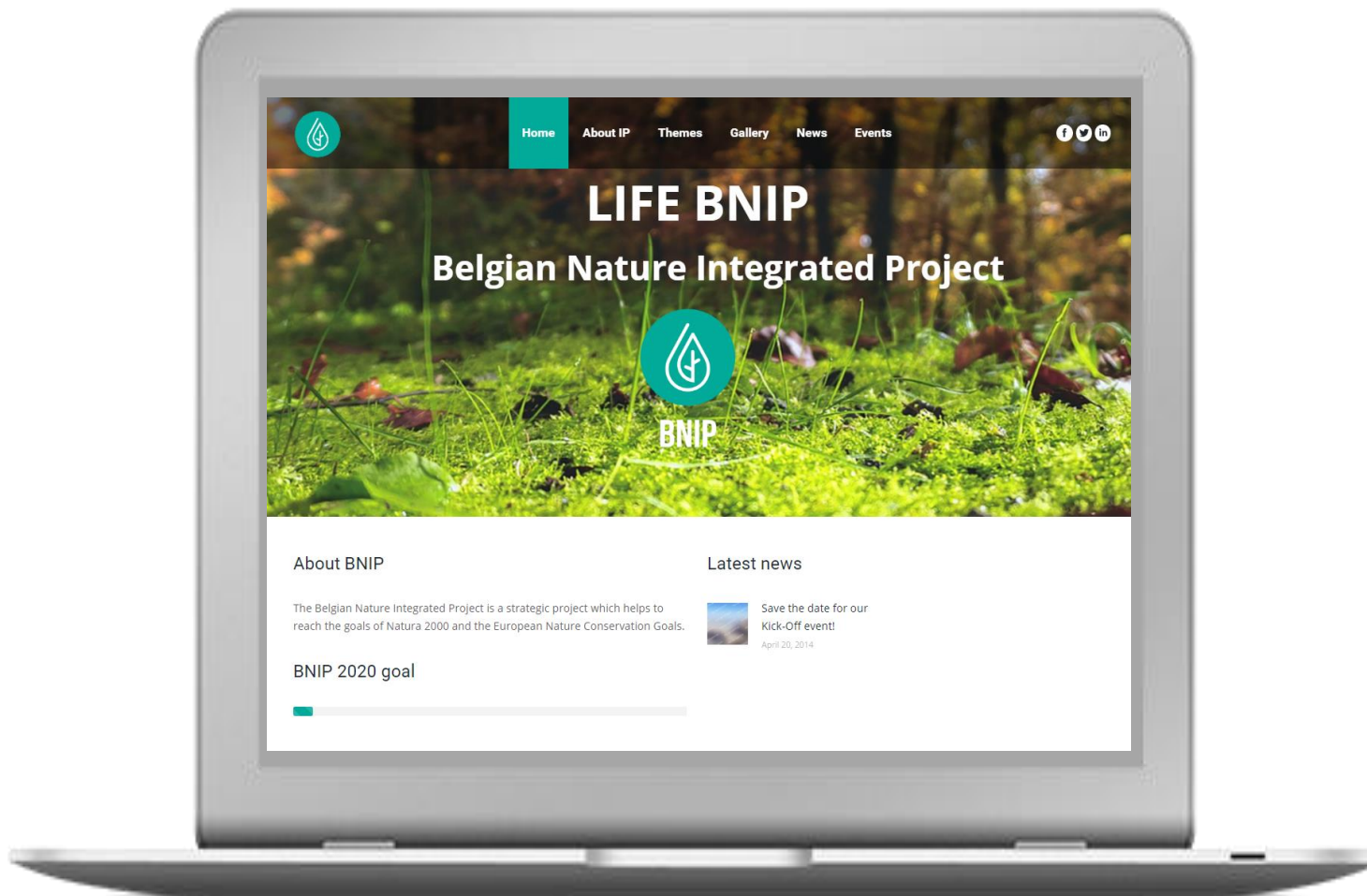




Looking for more info?



Visit: www.life-bnip.be



ik zit byna altyd op het
land

ik leg myn eities in ordiep
water zonder visser

en tydge geleden waren er
byna geen boomkikkers meer in
vlaanderen



kikker
m
o
o
o



BNIP



hank



ou!